



Nigeria Centre for Disease Control and Prevention
Protecting the health of Nigerians

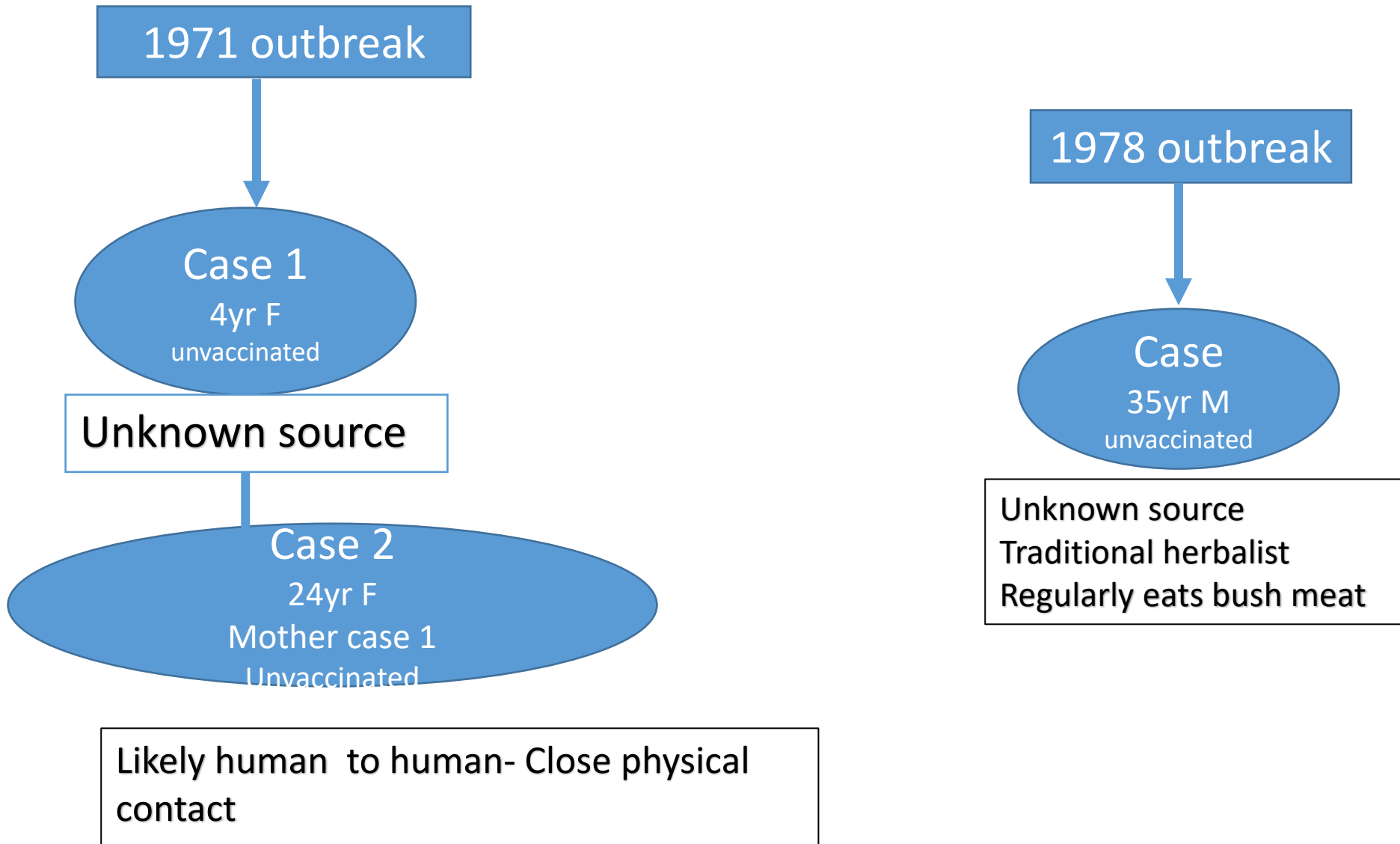
Mpox Situation In Nigeria

National Mpox EOC

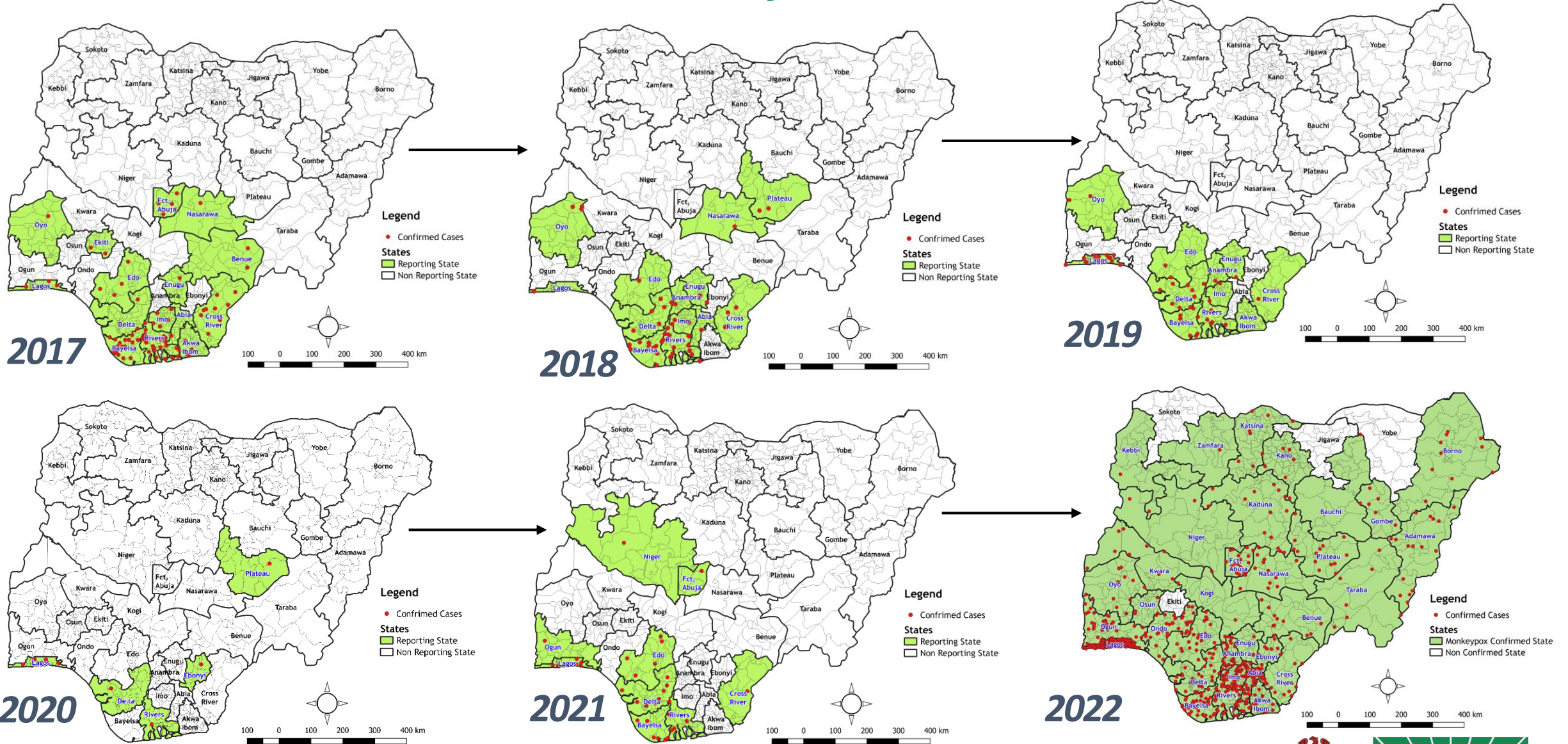
November 12 2024

Odianoson Ehiakhamen MB.BS, MPH, MPH FETP

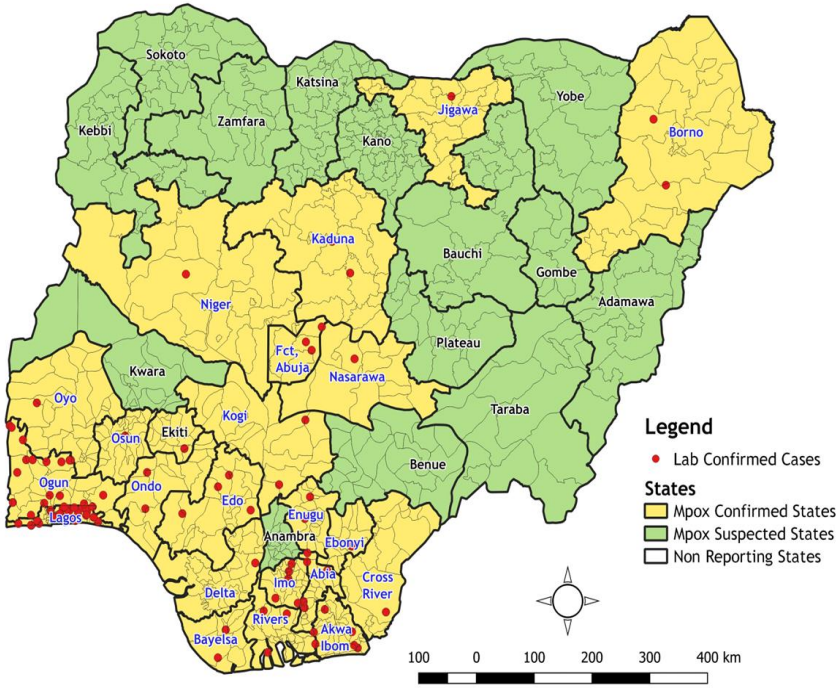
How is mpox transmitted in Nigeria?



MPX Distribution across the country from 2017 to 2022

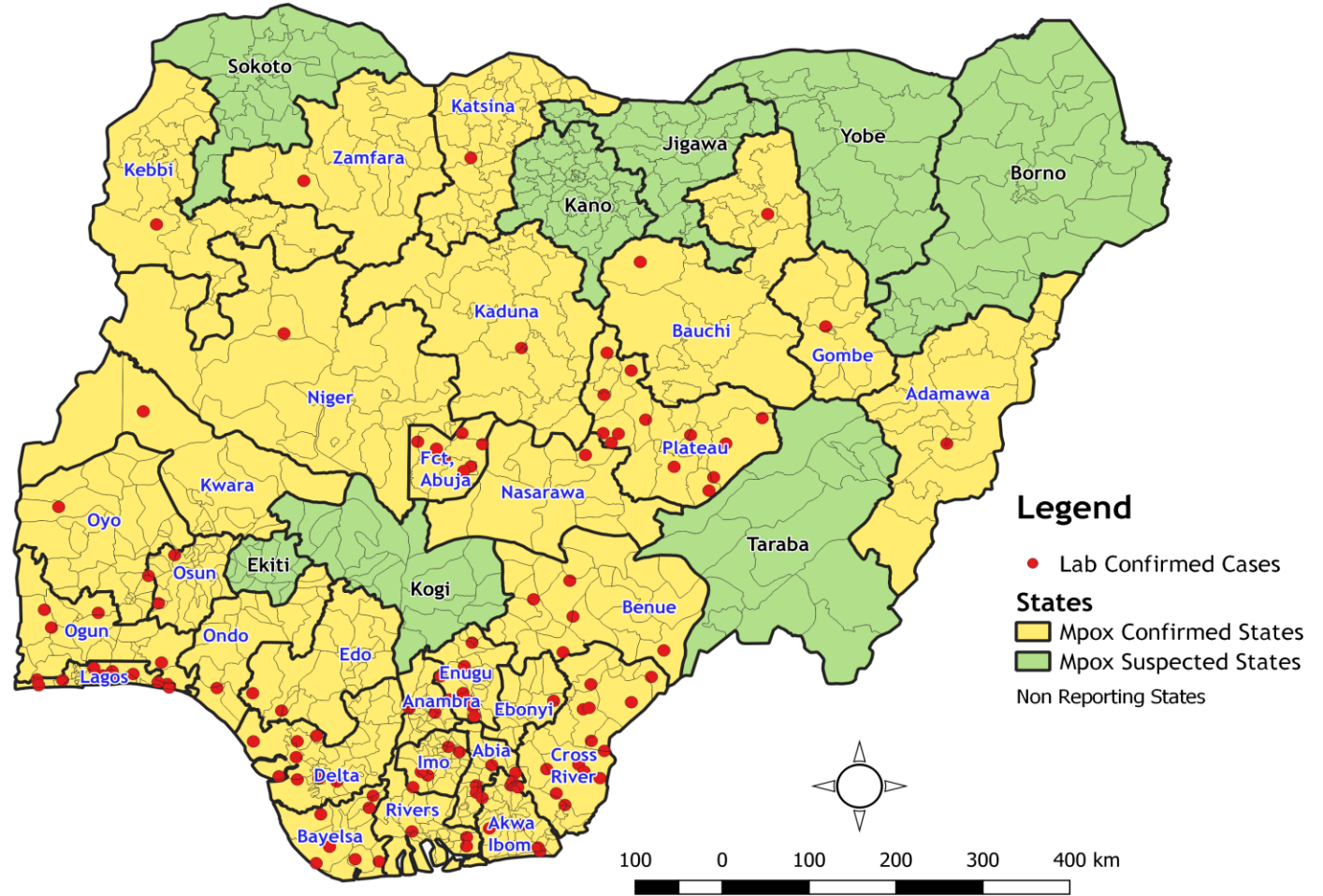


Map of Nigeria Showing States with Confirmed/Suspected Mpox Cases 2023, 2024

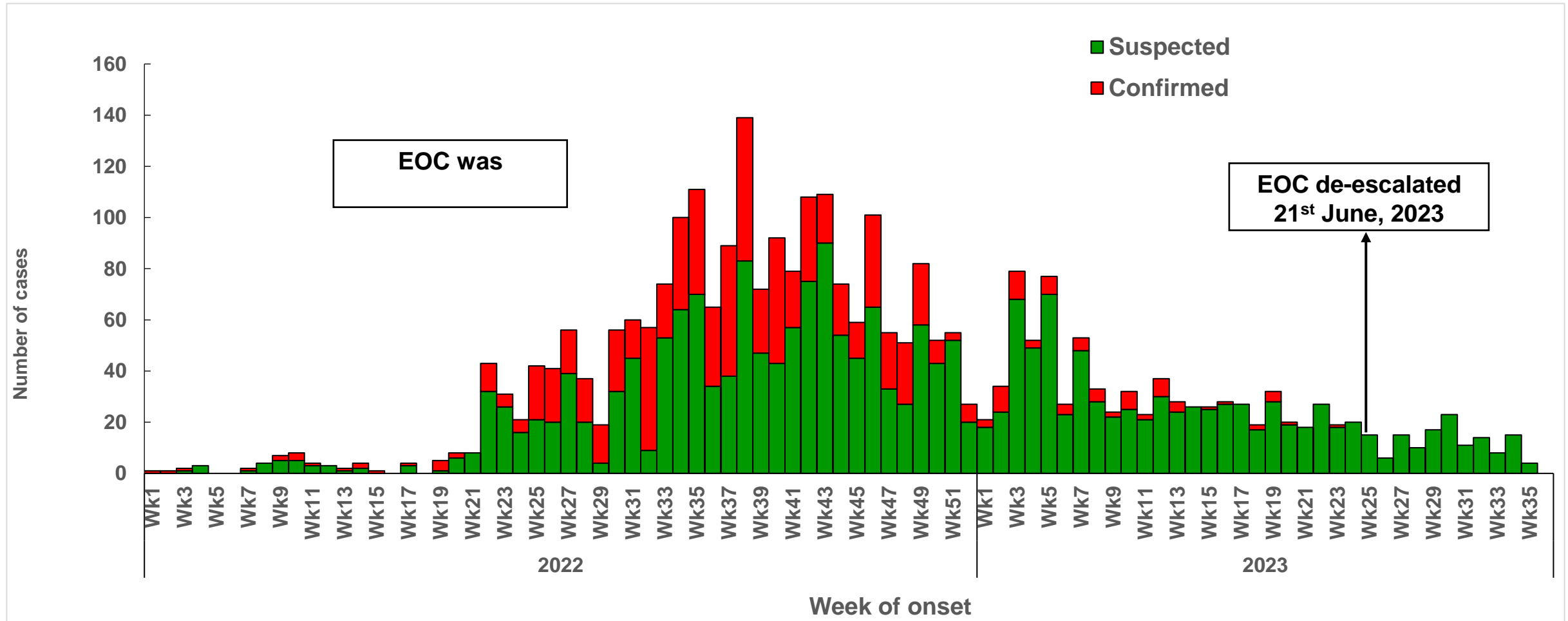


2023 picture

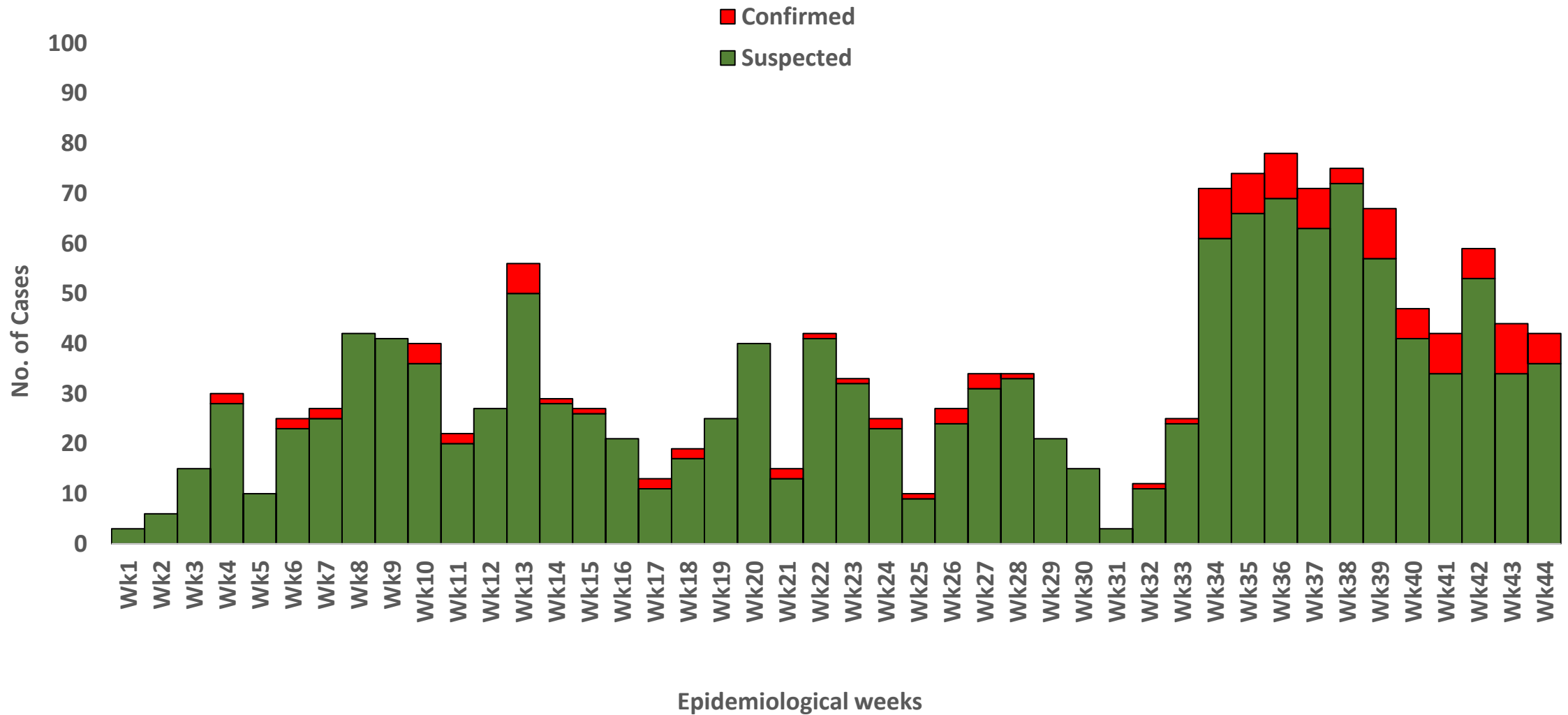
Suspected: 1182
Confirmed: 98



2022/2023 situation



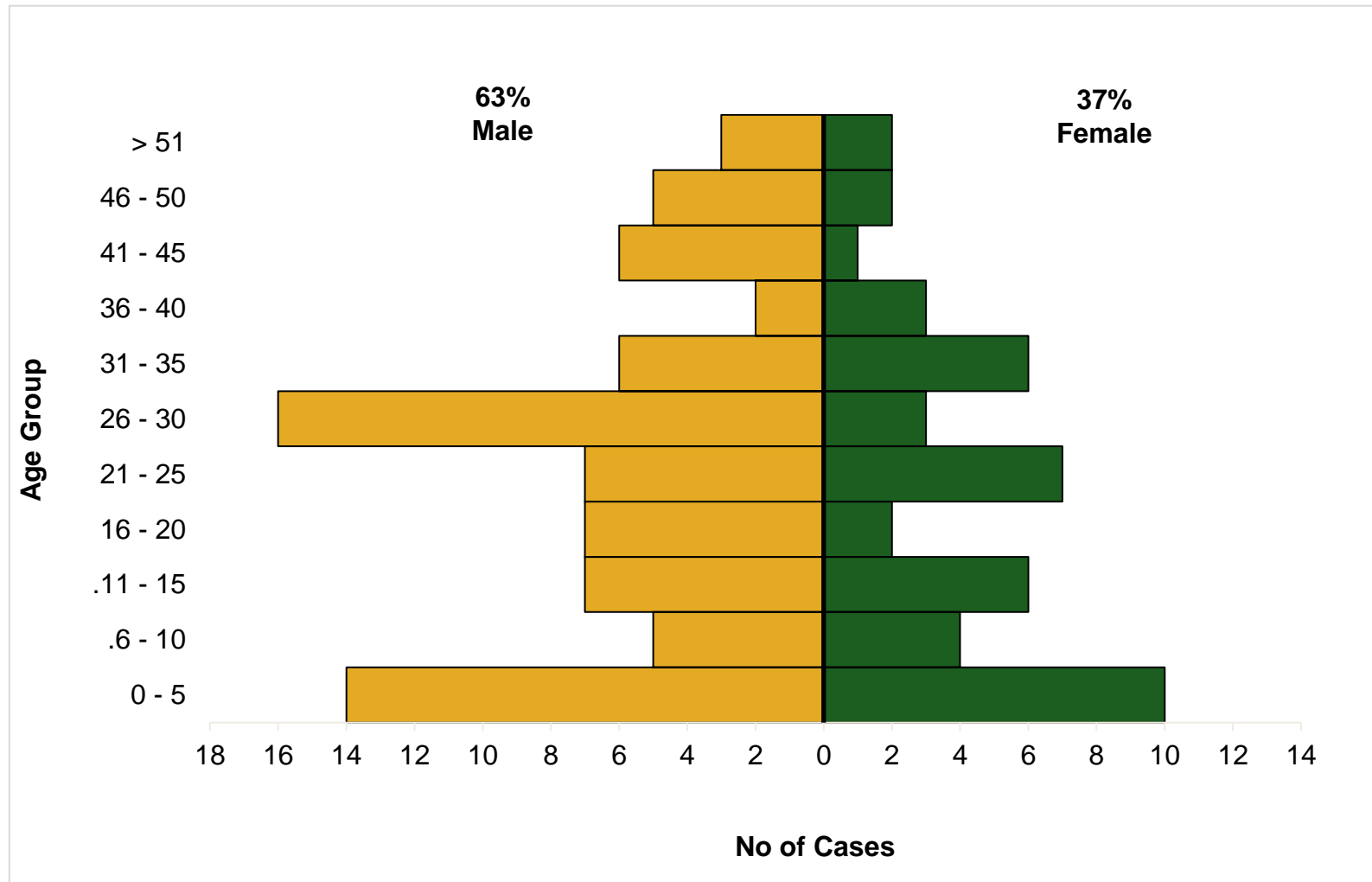
Epidemic Curve of Suspected & Confirmed Mpox Cases from Week 1 – 44, 2024



Mpox Epi Week Summary, from Week 1 to 44, 2024

- Suspected Cases: **1484** (36 states + FCT)
- Mpox Confirmed cases: **124** (28 states + FCT)
- **Contact line-listed: 393**
- VZV Confirmed cases: **711** (35 states + FCT)
- Co-infection (Mpox & VZV): **42** (21 States + FCT)
- Death: **0**

Age and sex distribution of Nigeria confirmed Mpox cases from week 1 – 44, 2024

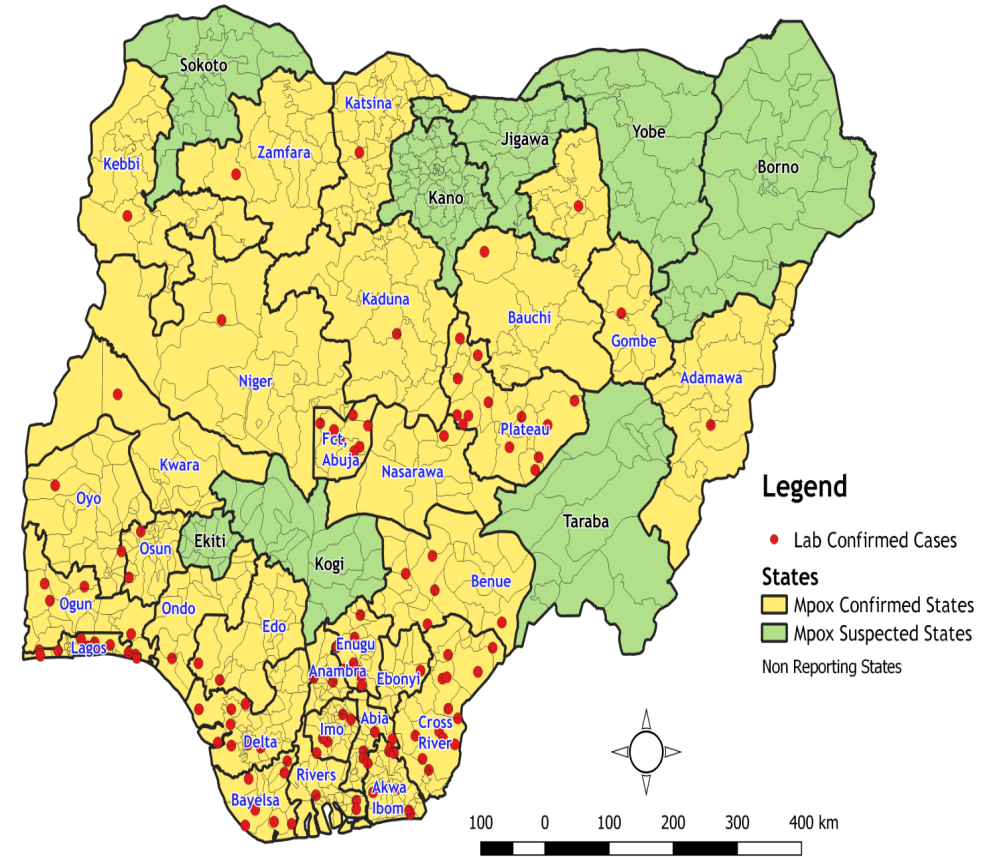
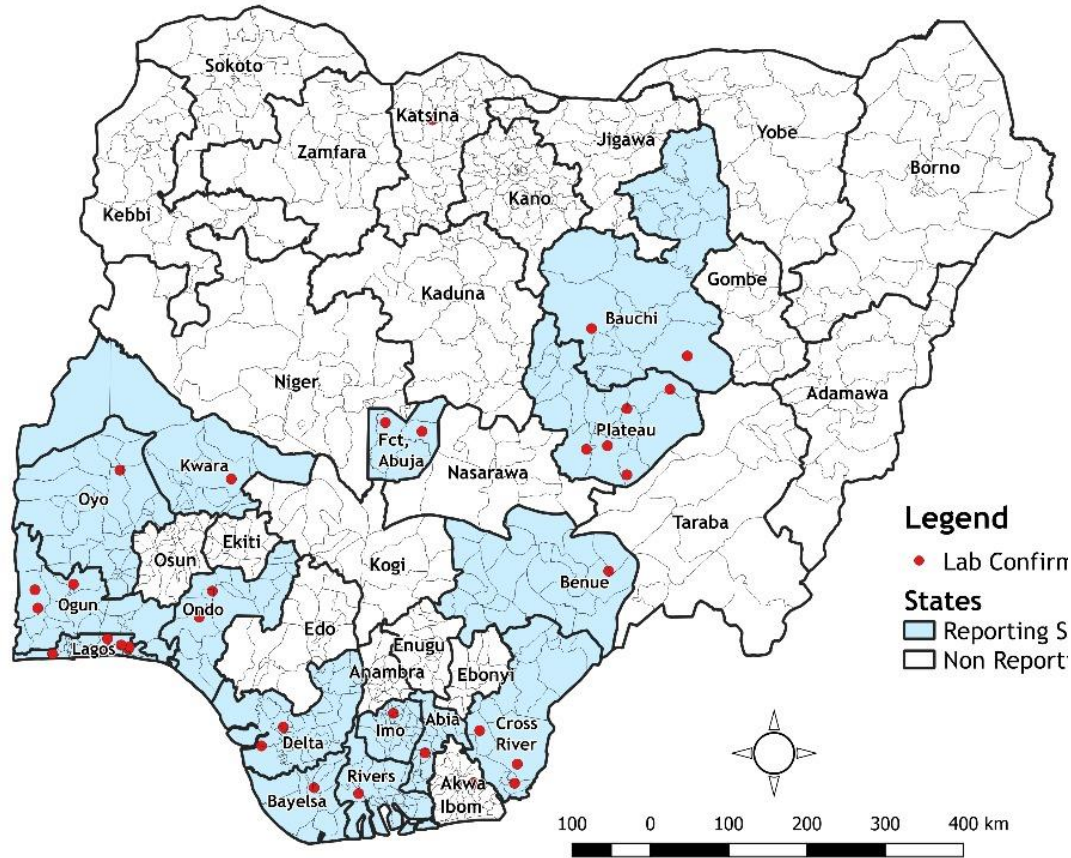


Male: **78**
 Female: **46**



Last 4 weeks (41-44)

1-44



Vaccine administration considerations

General populations with context indications for most high-risk population



Available data on vaccine safety and efficacy for all available vaccines – second & third generation smallpox vaccines

Jynneos vaccine (3rd gen)

**For Acam2000 (2nd gen),
recommended only for adults
(18 and above)**

**LC16 vaccine approved in
Japan for children with good
efficacy and few side effects**



Definition and selection of the target groups

Selection based primarily on surveillance data

Consideration for decisions

Locations – burden of disease, prevalence, case counts, level of reporting, proximity to riverine communities (ecological influences)

Gender - prevalence in male and female

Pre-existing medical conditions and co-morbidities, immunocompromised

Priority and special groups (MSMs, FSWs)

Consideration for decisions /2

- Age – pediatric and young adults
- Health workers
- Special populations as recommended by WHO SAGE
 - Children (<18 years) ???
 - Pregnant women
 - breastfeeding women
 - controlled HIV (CD4 \geq 200)
 - Non-controlled HIV (CD4 <200)
 - Other immunocompromised
 - exfoliative skin conditions
 - previously smallpox-vaccinated individuals



Mpox Vaccine Proposed Recipients

- Close contacts of confirmed/ probable case (within 2 Incubation period)
- Closed settings (cases reported) Prisons, hostels, schools, barracks
- Health Care Workers (Mpox contact)
- Ring vaccination in community transmission
- Other at-risk groups _ Immunosuppression, MSM, FSWs
- Travelers ???



Activities

- Media Briefs
- Operational Plan/IAP
- Engagement with partners
- **Vaccination planning meeting** ✓
- Risk Assessment (High Risk)
- EOC Escalation to L2
- POE Engagement & Cross Border Surveillance e.g. Health Declaration form
- Capacity Building workshops across board



THANK YOU

